



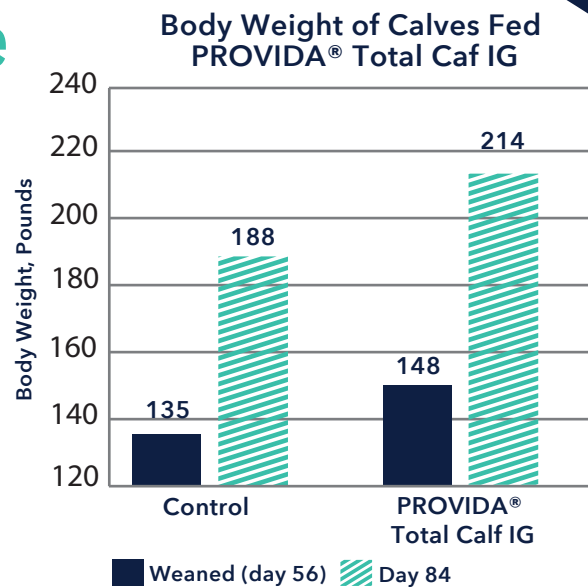
PROVIDA TOTAL CALF IG

A complete dietary supplement for calves during the first few weeks of life

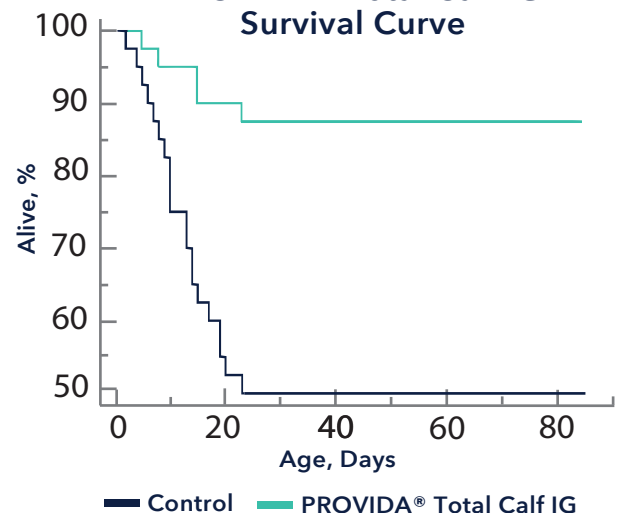
Combines the benefits of:

- PROVIDA® Probiotics
- CEREVIDA® LIVE YEAST
- CEREVIDA® EXCELL-M (Soluble Yeast Cell Wall)
- PowerGuard® micronized porous ceramic technology
- Functional proteins from plasma and whey fractions

PROVIDA® TOTAL CALF IG was formulated specifically for calves for the first 2-3 weeks of life, when they are more susceptible to gastro-intestinal diseases.



PROVIDA® Total Calf IG Survival Curve





INTESTINES



VITAMINS & MINERALS



PROTECT

An Immunoglobulin, probiotic, yeast extract, vitamins, and minerals supplement for milk-fed calves fed for the first 2 to 3 weeks of life

Contains a source of live, viable naturally occurring microorganisms

- Contains B-vitamins, fat soluble vitamins, and trace minerals
- Contains a proprietary blend of more soluble yeast extracts

GUARANTEED ANALYSIS

Crude Protein (min).....	46%
Globulin Protein (min).....	14.5%
Calcium (min).....	0.35%
Calcium (max).....	0.45%
Iron (min).....	1,325 ppm
Zinc (min).....	550 ppm
Copper (min).....	125 ppm
Manganese (min).....	550 ppm
Cobalt (min).....	1.5 ppm
Selenium (min).....	4 ppm
Vitamin A (min).....	200,000 IU/lb
Vitamin D (min).....	75,000 IU/lb
Vitamin E (min).....	1,000 IU/lb
Vitamin C (min).....	2,000 mg/lb
Thiamine (min).....	30 mg/lb
Riboflavin (min).....	30 mg/lb
Niacin (min).....	45 mg/lb
D-pantothenic acid (min).....	60 mg/lb
Vitamin B6 (min).....	30 mg/lb
Biotin (min).....	0.45 mg/lb
Vitamin B12 (min).....	0.33 mg/lb
Folic acid (min).....	2.25 mg/lb
Active dry yeast (<i>Saccharomyces cerevisiae</i>)...50 billion CFU/lb	
<i>Enterococcus faecium</i> (min).....	20 billion CFU/lb

INGREDIENTS

Bovine plasma, yeast extract, montmorillonite clay, dextrose, Dried Whey Protein Concentrate, active dry yeast, calcium carbonate, vitamin E supplement, vitamin A supplement, vitamin D supplement, thiamine mononitrate, riboflavin, niacin supplement, calcium pantothenate, biotin, ascorbic acid, pyridoxine hydrochloride, folic acid, vitamin B12 supplement, iron proteinate, ferrous sulfate, zinc proteinate, manganese proteinate, manganese sulfate, zinc sulfate, copper proteinate, sodium selenite, copper sulfate, dried *Enterococcus faecium* fermentation product, silicon dioxide, calcium iodate, and cobalt sulfate.

DIRECTIONS FOR USE

1 Scoop=45g

- Add 1 scoop for 1 calf daily. Add 1 scoop for 2 calves fed twice daily.
- Add 1 pound for 10 calves daily. Add 1 pound for 20 calves fed twice daily.

PACKAGING & STORAGE

Available in:

- 20 lb bucket (#2012)
- 40 lb bag (#2006)

Store in cool, dry place. Keep tightly closed. Shelf life of 12 months when stored in original packaging.



MBFEEDS.COM