



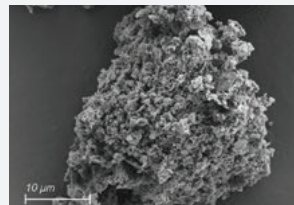
GUARDIAN

A calf's gastro-intestinal tract is susceptible to infection and disease in early life

Supplement GUARDIAN in the milk of calves

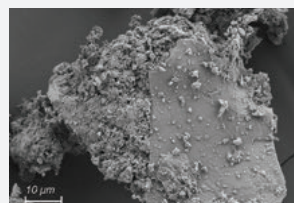
- Engineered using the patented Micronized Porous Ceramic Technology
 - Increased pore expansion and binding surface area ensures unmatched adsorptive capacity
 - Binds & eliminates from gastro-intestinal tract
- Adsorbs a Broad-spectrum of Biotoxins
 - Data indicate reduced intestinal inflammation when GUARDIAN adsorbs biotoxins
- Does Not Interfere with Nutrient Bioavailability
 - Specifically, vitamins and trace minerals

GUARDIAN VS TYPICAL CLAY PROCESSING



GUARDIAN Micrograph

GUARDIAN creates micropores resulting in increased surface area, giving GUARDIAN superior and broad-spectrum performance.



Typical Clay Particle Micrograph

Typical Clay feed additives have fewer and more shallow pores. Smooth, nonporous structures reduce the physical ability and the efficiency of the clay.



PROTECT



VIGOR



INTESTINES

A Supportive Supplement Made with Ultrafine PowerGuard® the Patented Microporous Ceramic Technology™

- Added directly into liquid feed of livestock
- Micronized Porous Ceramic Technology™
 - Increases binding surface area
 - Binds & eliminates from gastro-intestinal tract

GUARANTEED ANALYSIS

Dry Matter (min).....	95%
Ash (min).....	94%

DIRECTIONS FOR USE

Do not exceed 2% in finished feed

- Add 4 grams for 1 calf daily
- Add 4 grams for 2 calves fed twice daily
- Add 1 pound for 110 calves daily
- Add 1 pound for 220 calves fed twice daily

INGREDIENTS

Montmorillonite Clay

PACKAGING & STORAGE

Available in:

- 13.2 lb buckets (#5020)
- 20 lb bags (#5021)

Store in a cool, dry place. Keep tightly closed and minimize exposure to moisture.



MBFEEDS.COM